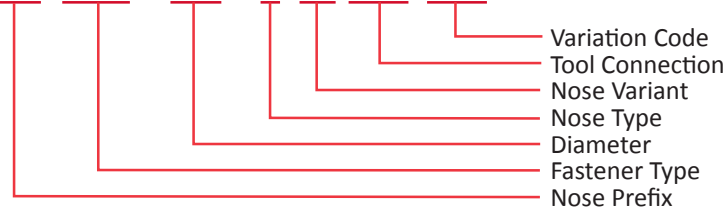


PART NUMBERING STRUCTURE FOR NEW NOSE ASSEMBLIES

A new numbering structure has been created to assist in ordering nose assemblies. ***This applies to new nose assemblies only; nose assemblies already in existence will retain their part numbers.*** Samples of this new numbering convention are on page two. Wall charts of this system will be made available upon request. Note: In some cases, part numbers may contain a one- or two-digit variation code. This code is meant to address any variation of a standard nose that cannot be covered by the typical codes. As always, should you have any questions, or if you need assistance, please contact us directly.

Example: [99] [LGP] - [06] - [I] [B] [AE] (-SV)



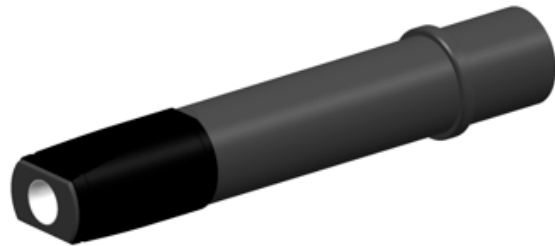
FASTENER TYPE	CODE	DIAMETER	CODE	NOSE TYPE	CODE	NOSE VARIANT	CODE	TOOL CONNECTION	CODE
ASP®	ASP	1/8"	04	Cutter	C	Short	S	2014	AA
AutoBulb™	ABP	5/32"	05	Inline	I	Regular	R	2013	AB
Blind Bolt, Double Action	BBD	3/16"	06	Offset	O	Long	L	202/2012/2025	AC
Blind Bolt, Single Action	BBS	7/32"	07	Pull-In Inline	P	Extra Long	X	206/244OSX	AD
Blind Bolt, Washer	BBW	1/4"	08	Pull-In Offset	D	Short, Clearance	A	244/2480	AE
Blind Rivet, Double Action	BRD	9/32"	09	Right Angle	R	Regular, Clearance	C	208	AF
Blind Rivet, Single Action	BRS	5/16"	10	Self-Releasing Swage	F	Long, Clearance	B	254/2581	AG
Blind Rivet, Washer	BRU	11/32"	11	Self-Releasing Swage OS	E	Extra Long, Clearance	D	2600	AH
BobTail®	BT	3/8"	12	Sharkbite	S			2620	AI
BOM®	BOM	7/16"	14	Straddle Offset	Z			2624	AJ
C6L®	C6L	1/2"	16	Whalebite	W			3585	AK
C50L®	C50	9/16"	18					3630	AL
FloorTight®	FLT	5/8"	20					BTT14	AM
GP® Shear Lockbolt	GPS	3/4"	24					BTT25	AN
GP® Tension Lockbolt	GP	7/8"	28					BTT35	AO
Ground Stud Rivet	GSR	1"	32					BTT35LS	AP
HP8®	HP8	1-1/8"	36					BTT57	AQ
Huck-Clinch®/HuckMAX™	HCM	4mm	M4					SFBTT8	AR
HuckLok®	HKL	5mm	M5					SF15	AS
Huck-Spin®	HS	6mm	M6					SF20	AT
Huck-Spin 2®	HS2	7mm	M7					SF32/32L	AU
Hucktainer®	HLP	8mm	M8					SF46	AV
LGPL®	LGP	10mm	M10					SF60	AW
Magna-Bulb®	MGB	12mm	M12					SF75	AX
Magna-Grip®	MGC	14mm	M14					HS37	AY
Magna-Lok®	MGL	16mm	M16					HS52	AZ
Magna-Tite®	MGT	20mm	M20					SW120	BA
PRX™	PRX	27mm	M27					SW75	BB
RXL™	RXL	30mm	M30					A1100	BC
SMLS	SML	36mm	M36					B4600	BD
Snaptail	ST	Multi	MD					2620PT	BE
TACK	TAC							2624PT/3585PT	BF
UAB™	UAB							202XL/2480L	BG
XPL®	XPL								

Alcoa Fastening Systems & Rings, 1 Corporate Drive, Kingston, NY 12401 | 800-278-4825

PKG: 9285
GRP: 01ALL-02ALL-03-04-05-06-07-08-
09-10-11-12-14-15-16-17-18-19-21-22

AEROSPACE: http://www.alcoa.com/fastening_systems/en/home.asp
INDUSTRIAL: <http://www.afshuck.net/us/>

June 16, 2016
PB641



Part Number:

99MGC-06-ICAC

Description:

An inline, regular length, clearance cut version of a Magna-Grip® nose assembly, for -06 diameter, which is compatible with 202X style tool.



Part Number:

99LGP-07-ZLAD

Description:

An offset, extended length, straddle version of an LGP® nose assembly, for -07 diameter, which is compatible with 206 style tool.



Part Number:

99BT-M12-CRAJ

Description:

An inline, regular length, cutter version of a BobTail® nose assembly, for M12 diameter, which is compatible with 2624 style tools.